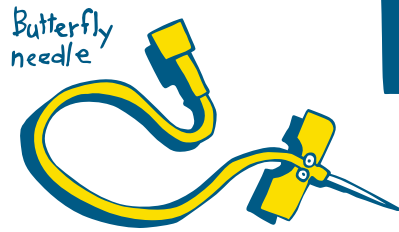
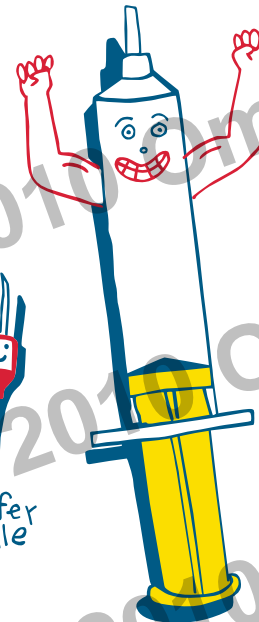
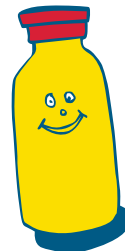
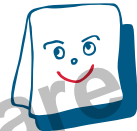


FACTORMAT



CHECKLIST

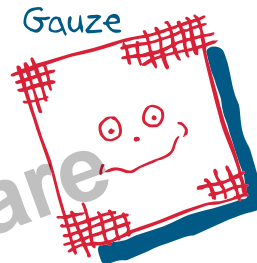
- Alcohol
- Band-aid
- Betadine sepp
- Butterfly needle
- Factor concentrate
- Factor syringe
- Filter needle
- Gauze
- Rubber gloves (2)
- Saline
- Saline syringe
- Sharps container
- Sterile water
- Tape
- Tourniquet
- Transfer needle



Sharps container

RULES

1. Helpers must always wear gloves.
2. Keep area clean. (No food on Factor Mat.)
3. Do not recap needle.
4. Dispose of all needles, syringes and vials in a sharps container immediately after use.
5. Do not share or reuse needles.
6. Clean all spills of blood with disinfectant (1 part household bleach added to 100 parts water).
7. Always wash hands thoroughly before and after infusion.



Tourniquet



Filter needle

